

# Identification of equids



Prepare the transponder and Reader







It is necessary to verify that  
the animal is not already  
identified.

**Do a check with a reader!**





Check if the  
transponder is  
defective!






With a reader check if the transponder emits a signal





The chip is implanted parenterally in aseptic conditions between the rear and the highest part of the back in the middle of the neck in the back tendon area.





The place of application must be treated with a disinfectant



The transponder is placed deep parenterally perpendiculary on the animal's neck







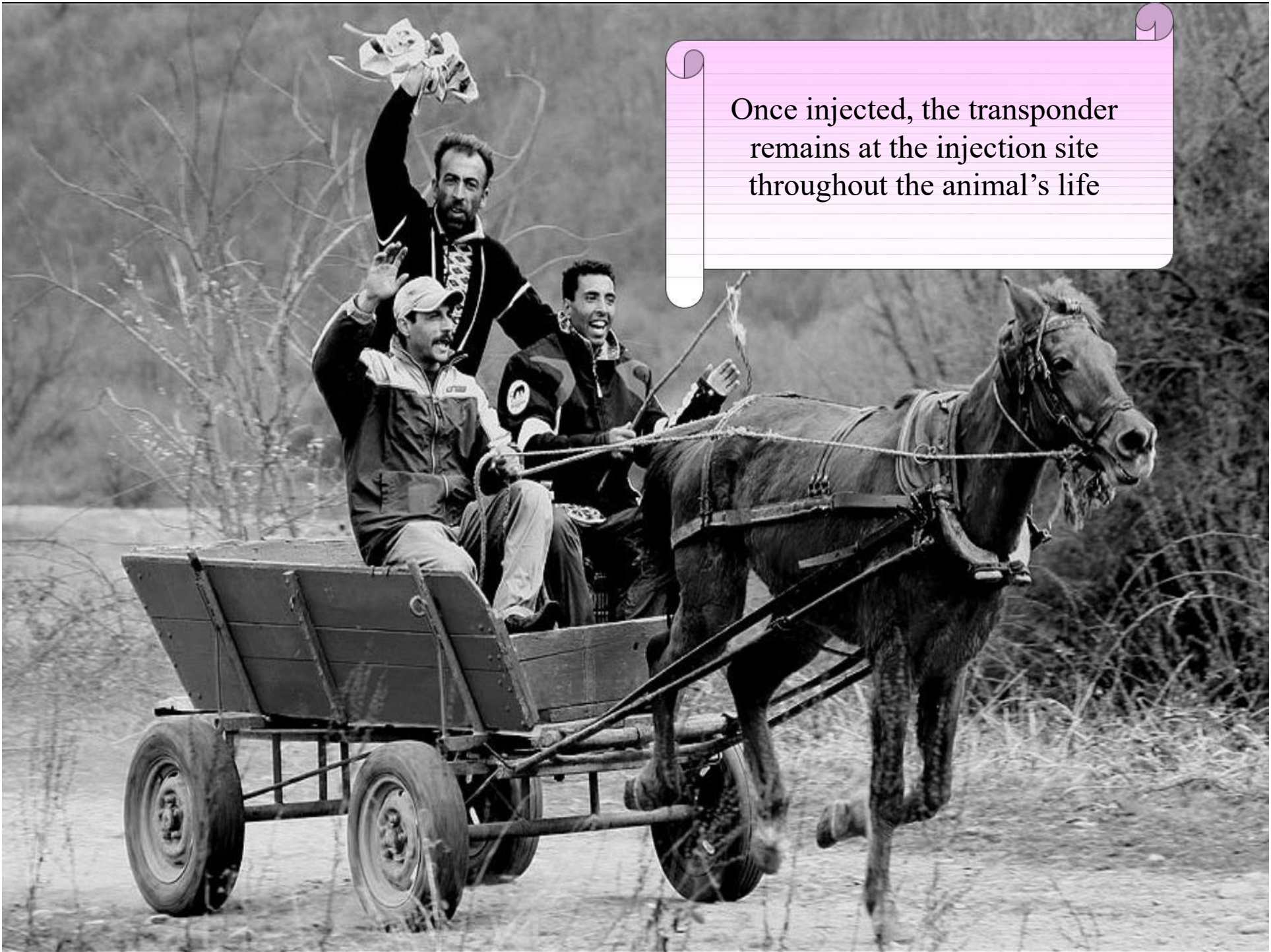
By palpation it is checked that the transponder has not been placed subcutaneous





After the application, the transponder must again be checked with the reader





Once injected, the transponder remains at the injection site throughout the animal's life



According to Regulation 963/2021 all equidae :

- § horses
- § donkeys
- § mules
- § Cutters
- § Zebras
- § and other

must be identified with a passport and the link between the passport and the animal is carried out by the injectable transponder/chip/